

PART OF THE N.E. 1/4, SEC. 21, T.5N., R.1W., S.L.B. & M. PLEASANT VALLEY ESTATES – PHASE 9

325

TAXING UNIT: 27

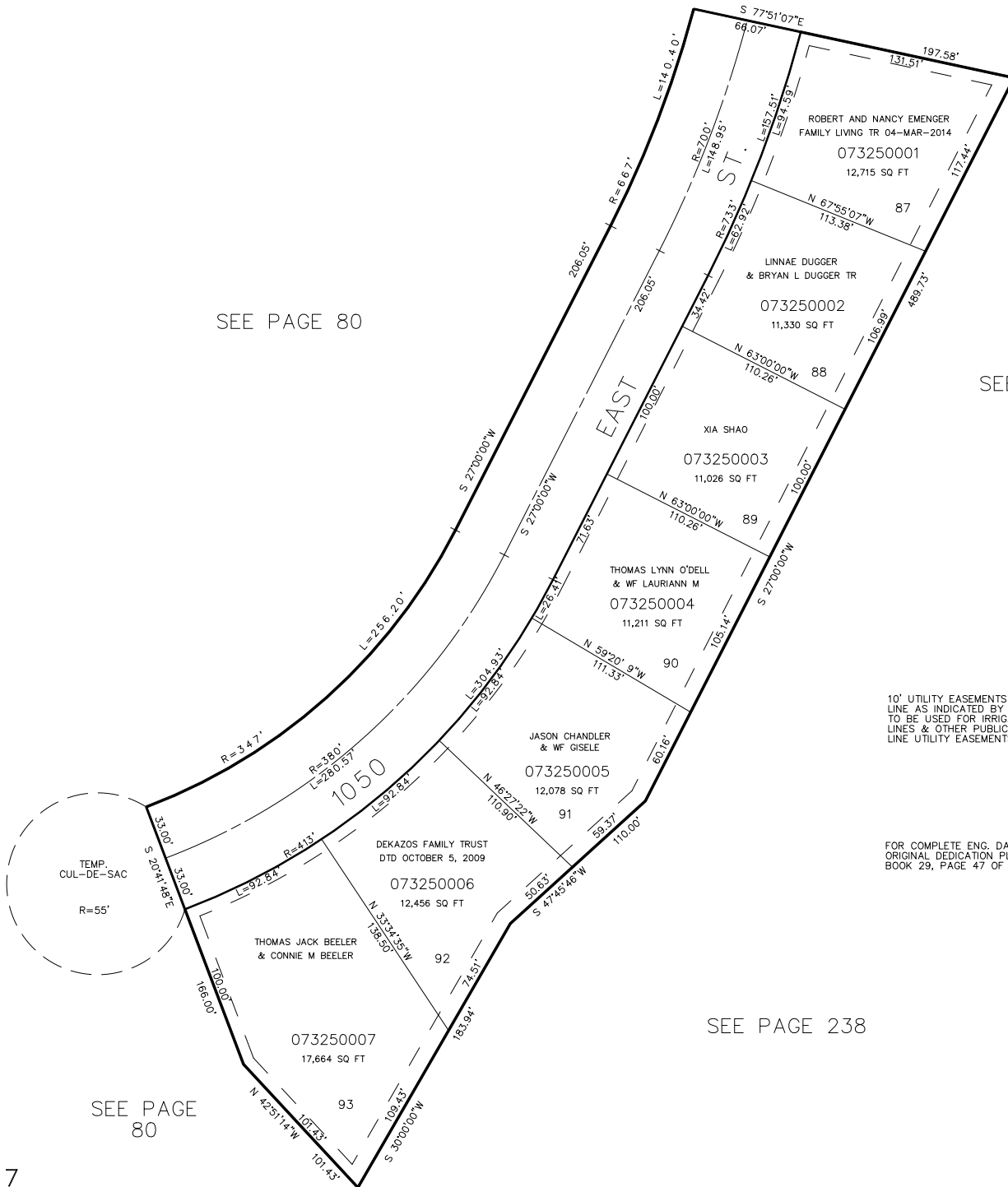
IN SOUTH OGDEN CITY

SCALE 1"=50'

SEE PAGE 80

SEE PAGE 80

SEE PAGE 221



SEE PAGE 238

SEE PAGE 80

(WEBER COUNTY SURVEYOR GRID BEARING)
N 0°09'49"E
S 0°46'45"W
604.44'